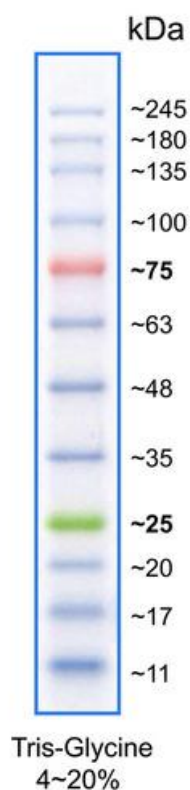


GRS Protein Marker MultiColour

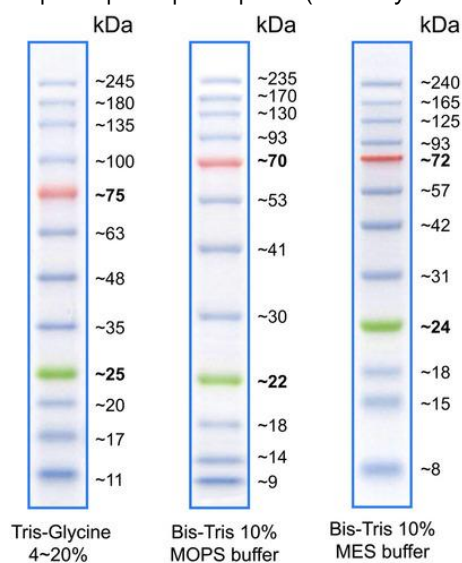
GLP01.0500 – 500µl | # GLP01.3500 – 3x500µl
(for research only)

Product:	ready-to-use pre-stained protein marker suitable for monitoring protein separation during SDS-PAGE, verification of Western Transfer Efficiency onto membranes, and for estimation of the molecular weight of proteins and/or polypeptides in the range of 10-250kDa. The GRS Protein Marker Multicolour is composed of 12 bands: 10 blue bands and 2 reference bands with different colours for easy identification (one red band (~25kDa) and one green band (~75kDa)).
Quantity:	500µl of approx. 0.1~0.4 mg/ml of each protein in 20mM Tris-phosphate , pH 7.5 (25°C), 2% SDS, 1mM Dithiothreitol, 3.6M Urea, and 15% (v/v) Glycerol.
Storage:	Up to 2 weeks at room temperature, 3 months at +4°C, 2 years at -20°C.



Contents (kDa)**

11 | 17 | 20 | **25** | 35 | 48 | 63 | **75** | 100 | 135 | 180 | 245 (Tris-Glycine 4-20%)



)The **apparent molecular weight of pre-stained proteins depends on the electrophoretic conditions and has been determined for SDS-PAGE using Tris-Glycine (4-20% gradient), Bis-Tris 10% MOPS, and Bis-Tris 10% MES Buffer by calibration against an unstained protein marker.

Recommended Loading

3µl or 5µl for clear visualization during electrophoresis on mini-gel (100-150 lanes).

1.5~2.5 µl per well for general Western transferring (200-300 lanes).

Apply more for thicker (> 1.5 mm) or larger gels.

Quality Control

Functionally tested by 15% SDS-PAGE (using Tris-Glycine Buffer) followed by Western Blotting onto nitrocellulose membrane.

GRiSP Research Solutions

Rua Alfredo Allen, 455

4200-135 Porto

Portugal

www.grisp.pt | info@grisp.pt